



Process Control Plan

No: **PCP BFWW-07**

Models affected: Malmet Warming Cabinet Series

Revision: **A**

Title: **Options**

Page: 31 of 35

Issue Date: 11/12/2023

Combination Cabinet

Components Required:

Qty	Malmet Part #	Description	Picture
1	8-M00-83-0010	JOINING STRIP REAR (BFWW) (260)	
1	100-2315	JOINING STRIP REAR (210)	
1	100-2226	JOINING STRIP REAR (105)	
8	1-30-100	SETSCREW 5 x 12mm 304 SS HEX HEAD	



Process Control Plan

No: **PCP BFWW-07**

Models affected: Malmel Warming Cabinet Series

Revision: A

Title: **Options**

Page: 32 of 35

Issue Date: 11/12/2023

8	1-100-220	WASHER FLAT SS 3/16"	
8	1-30-240	WASHER SPRNG 3/16" 304 SS	
3	8-5040	MTS SS M5x50 C/SUNK 3 for 260, 210L 2 For 105L	



Process Control Plan

No: **PCP BFWW-07**

Models affected: **Malmet Warming Cabinet Series**

Revision: **A**

Title: **Options**

Page: **33 of 35**

Issue Date: **11/12/2023**

Procedure:

Using the stationary fork lift to lift the unit onto the bottom unit.



Use caution when using the Fork lift, familiarize yourself with the controls before attempting to lift a unit.



Secure the bottom unit to the pallet, NOTE: Whether it's on a skirt or on castors, use the appropriate method to secure to the pallet. (ref PCP BFWW-08)



Move the top unit to the fork lift (usually on a table), position the forks inside the top and carefully lift





Process Control Plan

No: **PCP BFWW-07**

Models affected: Malmet Warming Cabinet Series

Revision: **A**

Title: **Options**

Page: **34 of 35**

Issue Date: **11/12/2023**

Carefully lift the unit and remove the table.



Then position bottom unit under the unit on the lift



Slowly ease the unit down onto the bottom unit

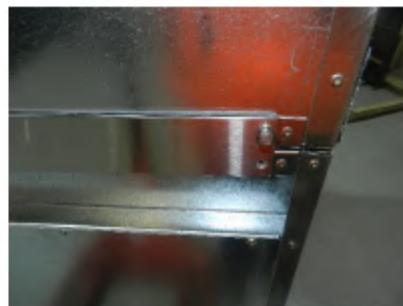


Fit the joining bracket to the rear using the following fasteners.

8 x M5 x 12mm hex bolts.

8 x 3/16 flat washers SS

8 x 3/16 spring washers SS





Process Control Plan

No: **PCP BFWW-07**

Models affected: **Malmet Warming Cabinet Series**

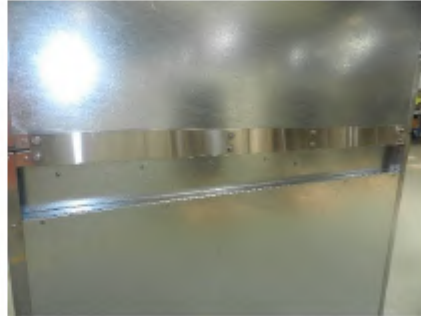
Revision: **A**

Title: **Options**

Page: **35 of 35**

Issue Date: **11/12/2023**

Fit all 8 bolts and tighten



Fit the three M5x 50mm C/S screws at the front inside and tighten.
Use Anti-Seize on screw



Combination cabinet Assembly is ready for next process.

