

EV9PHE Mattress

A short term alternative mattress for public health emergencies

The PHE – Green mattress requires no medical accessories, it has a maximum SWL of 200kg with a recommended therapeutic weight range of 50 - 150kg. It is a dual layered mattress intended to be used for adolescent and adult patients as a short term alternative mattress that will provide sufficient levels of pressure redistribution and comfort. The product is treated with UltraFresh™ which is an antimicrobial treatment that inhibits the growth of bacteria and fungi and also offers odour control and protection from staining and product degradation. The barrier surface on the PHE Green mattress is made from premium polyurethane textile (Carrflex VI115), all seams are fully welded for infection control and to protect against ingress of fluids. The cover comes with full wrap-around zip with a waterfall cover. The PHE Green mattress is only available in a thickness of 150mm, but can be varied in length and width to fit a variety of bed frames and adapts to most patient positioning.

The PHE Green mattress is available as an alternate medical device that can be used as a transient Class 1 Medical Device whilst still in compliance with section 41FN under the Therapeutic Goods Act 1989.

Specifications

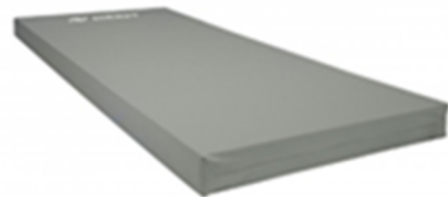
Size: 1980 x 860 x 150mm (other similar sizes are available at no extra cost)

Recommended therapeutic weight range of 50 - 150kgs

SWL of 200kg

Grey top cover – 4 way stretch - Carrflex VI115

Grey PVC bottom cover



Results of pressure mapping: The PHE – Green medical mattress showed good average pressure redistribution (below 32mmHg) for test subject in supine and lateral positions. These results are within the recommended average (overall) interface pressure for an average subject in the lying position.

Because this mattress is designed to be used as an alternate, transient mattress for public health emergencies its warranty period is for 12 months.

