

Shower Commode Seat Options



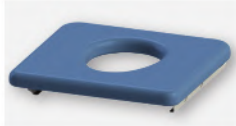
4Healthcare



4Healthcare

Shower Commode Seat Options

Polyurethane



**Commode Seat
Polyurethane - Blue Closed
Front
Width 470mm
4H411SCPU**



**Commode Seat
Polyurethane - Blue Open
Front
Width 470mm
4H411SOPU**

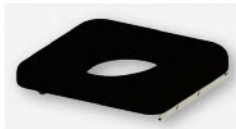
Pressure Care



**Commode Seat Pressure Care -
Black Side Open - Left
Width 470mm
4H411SLPC**



**Commode Seat Pressure Care -
Black Side Open - Right
Width 470mm
4H411SRPC**



**Commode Seat Pressure Care -
Black Closed Front
Width 470mm
4H411SCPC**

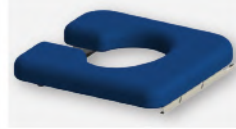


**Commode Seat Pressure Care -
Black Open Front
Width 470mm
4H411SOPC**

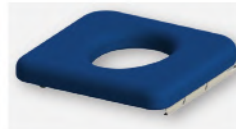
Pressure Management



**Commode Seat
Pressure Management - Blue
Side Open - Left
Width 470mm
4H411SLPM**



**Commode Seat
Pressure Management - Blue
Side Open - Right
Width 470mm
4H411SRPM**



**Commode Seat
Pressure Management - Blue
Closed Front
Width 470mm
4H411SCPM**



**Commode Seat
Pressure Management - Blue
Open Front
Width 470mm
4H411SOPM**

CODE	DESCRIPTION
WIDTH 550mm	
4H411SCPM55	Commode Seat Pressure Management Closed Front
4H411SOPM55	Commode Seat Pressure Management Open Front
4H411SLPM55	Commode Seat Pressure Management Side Open - Left
4H411SRPM55	Commode Seat Pressure Management Side Open - Right
WIDTH 600mm	
4H411SCPM60	Commode Seat Pressure Management Closed Front
4H411SOPM60	Commode Seat Pressure Management Open Front
4H411SLPM60	Commode Seat Pressure Management Side Open - Left
4H411SRPM60	Commode Seat Pressure Management Side Open - Right

All Shower Commode Seat Options include Pan Runners



Distributor

EVOCARE AUSTRALIA PTY LIMITED

A.B.N. 98 078 566 604

Trading as **EVOCARE** and **L&M EQUIPMENT**

P.O. Box 1144, Stafford Qld. 4053

Ph: 07 3355 8000 Fax: 07 3355 5043

Website: <http://www.evocare.com.au>

Email: sales@evocare.com.au

workshop@evocare.com.au

warehouse@evocare.com.au

accounts@evocare.com.au



Global-Mark.com.au®

*Due to 4Healthcare's commitment to continuous improvement, our products are subject to change without notice.

(Rev.1)