

# OWNER'S MANUAL



## MOBILE SHOWER CHAIR with Padded Seat



**LM1614**

Thank you for purchasing this Evocare Mobile Shower Chair with padded seat. It is strongly recommended that you read through this user manual prior to using your Mobile Shower Chair with padded seat for the first time. Your Mobile Shower Chair with padded seat should provide years of trouble-free use, provided that you adhere to these recommendations.

**WE ARE HERE TO HELP YOU**

**To request product service and order replacement parts, please call:**

**Customer Service: 07 3355 8000**

**Spare Parts: 07 3355 8007**

**8.30 am to 5.00 pm Monday to Friday**

**Email: sales@[evocare.com.au](mailto:sales@evocare.com.au)**

**If the product does not function properly contact [Evocare](#) Australia.**

When requesting service, please provide the following information:

1. Part Code and Description
2. Date of Purchase

Address: Evocare Australia Pty Limited  
260 South Pine Road, Enoggera, Qld. 4051  
P.O. Box 1144, Stafford, Qld. 4053

## **Safety / Handling of Mobile Shower Chair with padded seat**

Safety and handling of the mobile shower chair with padded seat requires the close attention of the mobile shower chair user as well as the assistant. This manual points out the most common procedures and techniques involved in the safe operation and maintenance of the mobile shower chair. It is important to practice and master these safe techniques until you are comfortable in manoeuvring around the frequently encountered architectural barriers.

Use this information only as a basic guide. The techniques that are discussed on the following pages have been used successfully by many users.

Individual mobile shower chair users often develop skills to deal with daily living activities that may differ from those described in this manual. All warnings and cautions given in this manual **MUST** be followed.

Techniques in this manual are a starting point for the new mobile shower chair user and assistant with safety as the most important consideration for all.

### **Stability and Balance**

To assure stability and proper operation of your mobile shower chair, you must at all times maintain proper balance. Your mobile shower chair has been designed to remain upright and stable during normal daily activities as long as you do not move beyond the centre of gravity.

Virtually all activities which involve movement in the mobile shower chair have an effect on the centre of gravity.

DO NOT lean forward out of the mobile shower chair any further than the length of the armrests. Make sure the castors are pointing in the forward position whenever you lean forward. This can be achieved by advancing the mobile shower chair and then reversing a little in a straight line.

**Note:** Maximum user weight for this product is **100kg**.

**Evocare** is a quality endorsed company and supplies equipment listed with the Therapeutic Goods Administration.

The ARTG number for the LM1614 Mobile Shower Chair is 175496.

## OPERATION

### Operating Instructions

To determine and establish your particular safety limits, practice bending, reaching and transferring activities in several combinations in the presence of a qualified health professional before attempting active use of the mobile shower chair.

ALWAYS check hand grips for looseness before using the mobile shower chair. If loose and/or worn, replace immediately.

If the mobile shower chair is exposed to extreme temperature (above 38°C or below 0°C), high humidity and/or becomes wet, prior to use, ensure hand grips DO NOT twist on the mobile shower chair handle—otherwise damage or injury may occur.

DO NOT attempt to reach objects if you have to move forward in the seat as this may tip the mobile shower chair.

DO NOT attempt to reach objects if you have to pick them up from the floor by reaching down between your knees as this may tip the mobile shower chair.

DO NOT lean over the top of the back upholstery to reach objects behind you, as this may tip the mobile shower chair.

DO NOT shift your weight or sitting position toward the direction you are reaching, as this may tip the mobile shower chair.

DO NOT tilt the mobile shower chair without assistance.

NEVER leave an unoccupied mobile shower chair on an incline.

Before attempting to transfer in or out of the mobile shower chair, every precaution should be taken to reduce the gap distance. Turn both castors parallel to the object you are transferring onto. When transferring to and from the mobile shower chair, ALWAYS lock castors before transferring to and from the mobile shower chair.

DO NOT operate on roads, streets or highways.

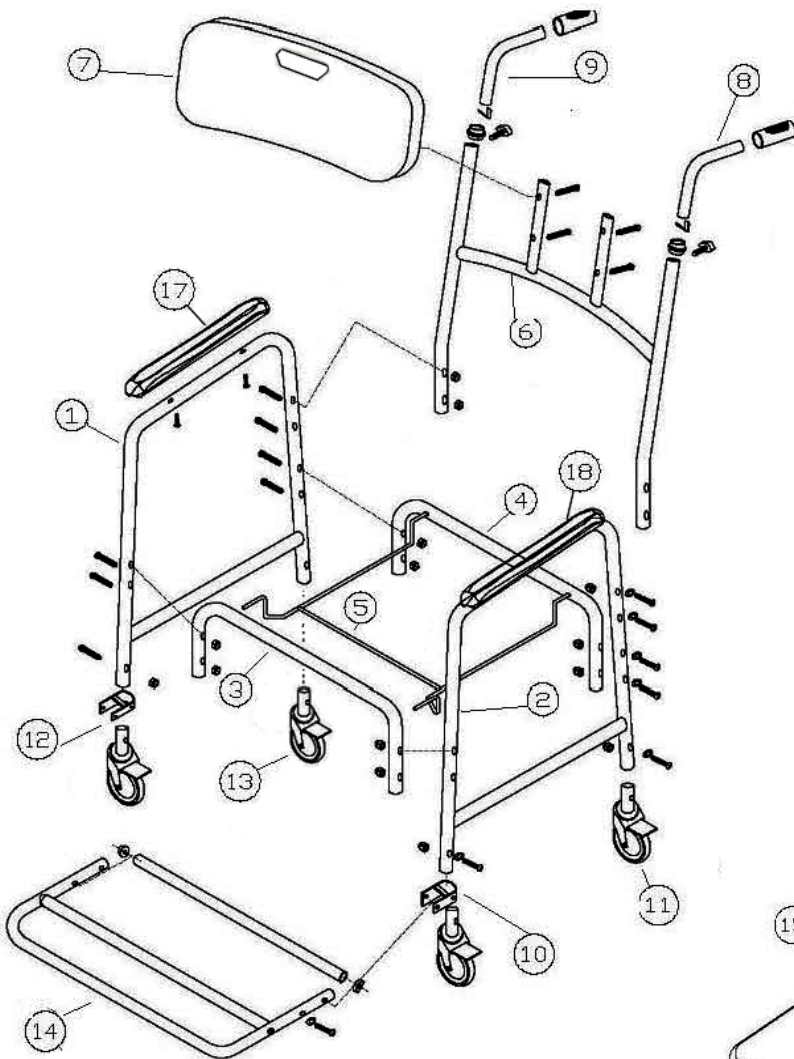
DO NOT climb, go up or down ramps or traverse slopes greater than 9°.

DO NOT attempt to move up or down an incline which has a film of water, ice or oil on it.

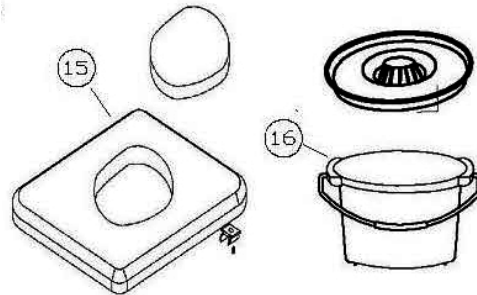
DO NOT attempt to ride over obstacles. Doing so may cause your mobile shower chair to tip, causing bodily harm or damage to the mobile shower chair.

DO NOT over tighten hardware attaching to the frame. This could cause damage to the frame tubing.

# ASSEMBLY & PARTS LIST



No.	Code	Description
1	LM1614MF	Main frame
2	LM1614MF	Main frame
3	LM1614MFS	Main frame stay
4	LM1614MFS	Main frame stay
5	LM1614BC	Bowl Carrier
6	LM1614BF	Back frame
7	LM1614BR	Backrest
8	LM1614H	Handle
9	LM1614H	Handle
10	LM1614C	Castor
11	LM1614C	Castor
12	LM1614C	Castor
13	LM1614C	Castor
14	LM1614FR	Footrest
15	LM1614SCF	Closed front Seat
16	LM1614B	Bowl
17	LM1614AR	Armrest
18	LM1614AR	Armrest



1. Install (1)(2)(4)(6) aluminium frame long bolts, tighten the screw to stabilise the frame.
2. Insert (5) frame into (4) side hole, insert the other side to (3) side hole, connect (3) to (1)(2) frame long bolts, tighten the screw to stabilise.
3. Insert (10)(11)(12)(13) castor into the side rail tube short bolts, tighten the screw.
4. Install the (4) footrest front pin.
5. Install (7) PE to back frame, assemble the (8)(9) handle bar to backrest frame.
6. Place the (16) bowl below (5) seat frame.
7. Put the (15) seat pad onto (3)(4) seat frame, place the seat cover.



**Caution:** Make sure all the chair screws are tight and that the castors are fixed and moving freely.

1. Evocare provides consumers with the following warranty in relation to this Product, in addition to complying with the requirements of any relevant legislation, including the *Competition and Consumer Act 2010* (Cth) in Australia and the *Consumer Guarantees Act 1993* in New Zealand (the Acts), except where a New Zealand consumer acquires the Product for the purposes of a business.
2. In this warranty, we have used the following definitions:
  - (a) **Form** means a warranty claim form issued by Evocare in respect of Products;
  - (b) **Evocare** or **our** means Evocare Australia Pty Limited, ABN 98 078 566 604 of Level 19, 144 Edward Street, Brisbane 4000;
  - (c) **Products** means the goods manufactured for Evocare (including products manufactured by its contract manufacturers);
  - (d) **Material** means a material or component used by Evocare in the manufacture of the Products;
  - (e) **Retailer** means the authorised dealer of Products from whom the Product was purchased;
  - (f) **Warranty Period** means the warranty period commencing from the date of purchase of the relevant Product. If the Product or part (as the case may be) is repaired or replaced, there will be no extension to the original warranty period; and
  - (g) **Workmanship** means the handling, assembly and manufacturing processes performed by or on behalf of Evocare in order to manufacture the Products.
3. Evocare warrants that for the duration of the Warranty Period, all Products will be free of faults arising from defects in Workmanship or Materials, on the terms and conditions set out in this warranty.
4. Evocare undertakes that if during the Warranty Period any Product, or any part of a Product, has failed to operate correctly due to faulty Workmanship or defective Material, it will repair or replace the Product or part (as the case may be) free of charge provided that the following procedures are met :
  - (a) The consumer must contact the Retailer or Evocare upon becoming aware of any defect to a Product upon which the consumer will be required to complete a Form and provide satisfactory proof of purchase.
  - (b) Evocare will review the Form to determine whether there is a defect, and if so Evocare agrees to (at its option) repair, replace or supply equivalent goods, or pay the cost of any of those remedies to the consumer.
  - (c) If Evocare requests the return of the applicable Product or part, the consumer will be responsible for the collection and freight costs of returning that Product or part to Evocare.
  - (d) The consumer acknowledges that it is also responsible for the freight costs to deliver any new Product or replacement part to it.
5. This warranty is in addition to any non-excludable legal rights or remedies conferred on the consumer under any applicable Act and any similar laws. To the extent permitted by law, Evocare's liability for any non-excludable condition or warranty is limited to rectifying any defect at its option, as set out in paragraph 4(b).
6. Subject to the requirements of any applicable Act or legislation and to the extent permitted by law, no liability (whether expressed or implied) of any nature whatsoever, is accepted by Evocare for any consequential loss, damage or injury arising as a result of any fault in the Products.
7. This warranty does not extend to damage to Products which occurs during transit or transportation, or which is caused by any abuse, accident or improper installation, connection, use, adjustment or repair or use of goods otherwise than in accordance with instructions issued by Evocare.
8. The warranty on Products is waived if any addition or attachment to the Products do not have Evocare's approval or are not sold as Evocare products. The Products are designed to perform specific tasks under established test loads and unauthorised attachments may produce stresses for which the design is not appropriate.
9. The following applies to consumers who purchased a relevant Product in Australia:

*Our goods come with guarantees that cannot be excluded under the Australian Consumer Law. You are entitled to a replacement or refund for a major failure and compensation for any other reasonably foreseeable loss or damage. You are also entitled to have the goods repaired or replaced if the goods fail to be of acceptable quality and the failure does not amount to a major failure.*

Evocare warrants this Mobile Shower Chair for a period of twelve months.

**NOTE:** This does not include staining or accidental damage from misuse or neglect.

Evocare must inspect the product within the warranty period for any claims lodged.

Evocare warranty does not cover product that has been modified from its original form.

For more information about your LM1614 Mobile Shower Chair, warranty or to order parts call 07 3355 8007.

E- mail: [sales@evocare.com.au](mailto:sales@evocare.com.au)  
Website [www.evocare.com.au](http://www.evocare.com.au)

**Manufactured for:**

Evocare Australia Pty Limited, 260 South Pine Road, Enoggera. QLD. 4051.

Phone: 07 3355 8000

FAX: 07 3355 5043