

EVO CARE AUSTRALIA PTY LIMITED

A.B.N. 98 078 566 604

Trading as **EVO CARE** and **L&M EQUIPMENT**

P.O. Box 1144, Stafford Qld. 4053

Ph: 07 3355 8000 Fax: 07 3355 5043

Website: <http://www.evocare.com.au>

E-Mail: sales@evocare.com.au

workshop@evocare.com.au



Quality
ISO 9001

Compact Lift Mobile (Single Motor)



Operating Instructions & Service Manual



INDEX

- Specifications 1
- Important Safety Precautions & Set up. 2, 3
- Operating Instructions 4
- Castors & Battery Backup 5
- Push Handle & Charge Battery 6
- Air Comfort Seating System 7
- Service & Maintenance 8
- Warranty / Service Contract 9

SPECIFICATIONS

MAXIMUM USER WEIGHT: 120kg

DIMENSIONS:

	Small	Medium	Large
Outside			
Height	1060mm	1260mm	1150mm
Width	750mm	750mm	620mm
Length (Seated Position)	820mm	820mm	890mm
Inside			
Back Height	680mm	740mm	800mm
Seat Depth	430mm	510mm	510mm
Seat width	500mm	500mm	600mm
Seat Height	440mm	520mm	520mm

GROSS WEIGHT OF CHAIR: 65kg

CONSTRUCTION: Timber framework, Steel Lift Mechanism, Patented Air Comfort Seating System, Foam & fabric cover.

ACTUATOR: 24 Volt Electric

CASTORS: 2 x Ø100mm Grey TPE swivel castors (Rear)
2 x Ø100mm Grey TPE fixed castors

POWER SUPPLY: 220 – 240 V, AC 50 - 60Hz

BATTERY: Lead-Gel, 24 Volt DC

IMPORTANT SAFETY PRECAUTIONS

- This product has been designed and manufactured with safety and function for both the user and the operator as the utmost importance. The recommended max load capacity for this product is 120kg.
- Operators must read and follow the manual to ensure all safety precautions are not compromised.
- For safety when lowering the product to its lowest position, the operator should ensure any obstructions are removed from behind.
- When fully reclining the back on a single motor mechanism the chair should be positioned a minimum of 100mm distance from a rear wall.
- For safety transferring a patient on / off the chair, the operator must ensure that the rear castors have been locked
- Never have any loose objects in the vicinity of the product when using any of the functions, as these may obstruct, hinder or damage the moving components of the product. Always check the surrounding area and under the chair for objects that may be crushed with any movement of the product.
- Do not place anything over the power cords, pass any power cords through the chair or drag the chair by the cords. When positioning ensure all cabling is free of the mechanism. **Damaging the electrical cables voids the warranty.**
- Ensure electrical plug is disconnected from the wall before moving the product.
- Do not use as a CPR Bed.
- When not in use, leave the product in the upright position.
- Follow the maintenance instructions.
- Follow the cleaning instructions.

SET UP INSTRUCTIONS

The product is delivered fully assembled and ready for use however inspect the product before use.

For protection the transformer and power cable are stored behind the backrest cushion.

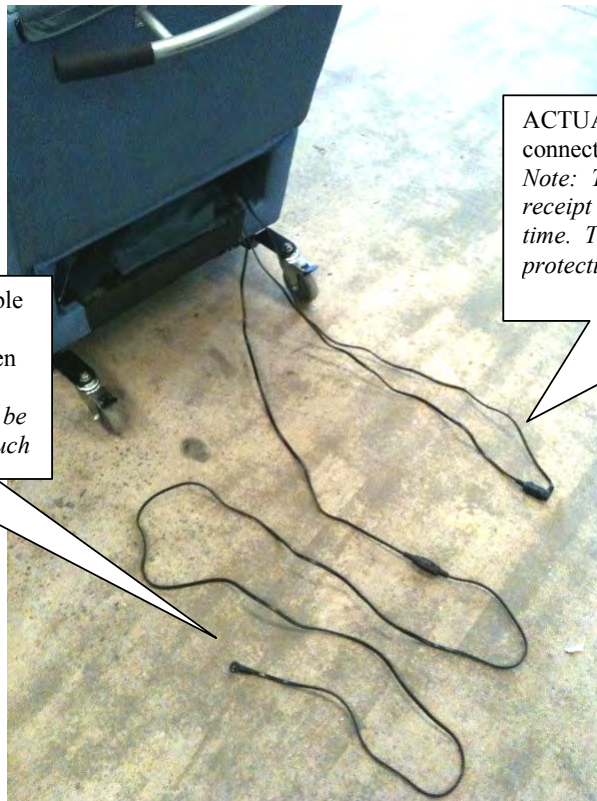


Transformer, power cord and cable can be found tucked behind the bottom of the lumbar cushion.

For protection the cables that connect the battery charge unit to the actuators and the battery to the transformer are located in a zipped pouch behind the bottom skirt at the rear of the chair.



Zipped protective pouch that contains cabling.



CHARGING CABLE: Cable for connecting the battery unit to the transformer when charging. *Note: When not charging this cable should be stored in the protective pouch*

ACTUATORS TO BATTERY CABLE: Cable connecting the actuators to the battery unit. *Note: These cables will be connected upon receipt and need not be disconnected at any time. This cable should be kept in the protective pouch at all times.*

OPERATING INSTRUCTIONS

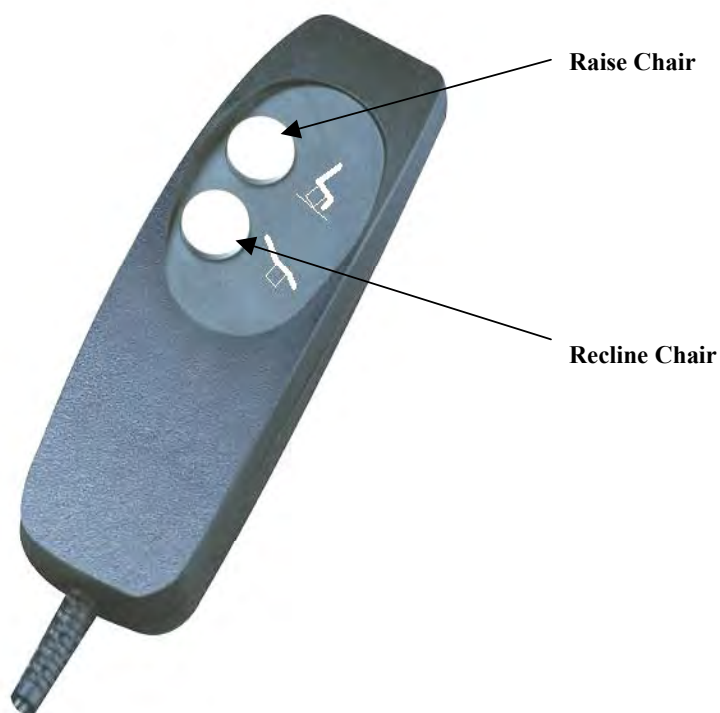
Positioning

The Air Comfort Compact Mobile Lift Chair (Single Motor) is fitted with one electric actuator. Using a handset, this allows the occupant or carer to gradually lift the chair at an angle to assist the occupant to sit or alight from the chair. Using the same handset the leg rest can be raised and the back reclined for further comfort.

- *When fully reclining the back on a twin motor mechanism the chair should be positioned a minimum of 100mm distance from a rear wall.*

Handset

The diagram below identifies which button on the handset operates which function of the chair.

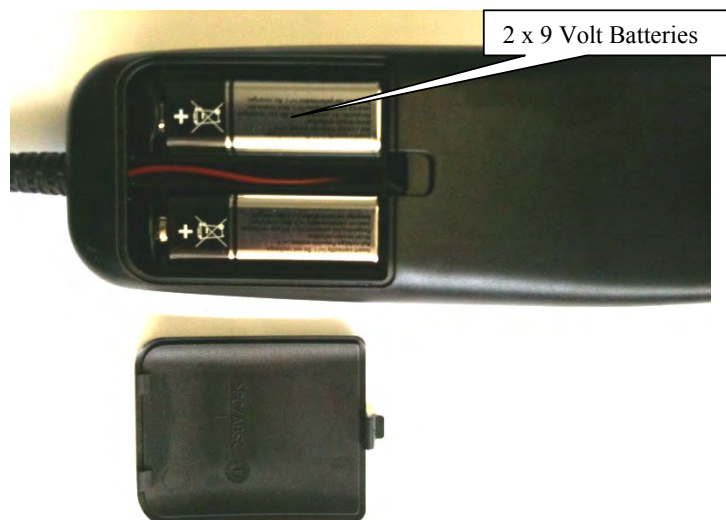


BATTERY BACKUP

The battery backup feature enables the lift chair to be powered to the raised position (once only) in the event of a power failure.

2 x 9v batteries are fitted to the compartment inside the hand control.

The batteries must be replaced if the lift chair has been operated during a power failure or operated when unintentionally not plugged into AC power.



CASTORS

All Compact Lift Mobile Chairs are fitted with four castors. The two rear swivel castors are also locking. To lock the castors simply push the black lever down. To unlock the castors push the same lever down on the opposite end. The operator should always use their foot for locking and unlocking the castors.



PUSH HANDLE

Every Compact Lift Mobile Chair is fitted with rear push handle so that the carer can maneuver the chair with greater ease either with or without an occupant seated.

Note: *Before maneuvering the chair with the occupant seated, ensure the footrest is slightly raised to bring the occupants feet off the floor.*



BATTERY CHARGE

The Compact Lift Mobile Chair (Twin motor) is fitted with a chargeable battery unit that is fixed inside the back frame. This battery enables the lift and recline functions to be operated when the chair is not plugged into AC power.

Charge the battery for a full 8 hours prior to use.

To charge the battery, connect the Charging Cable located in the protective pouch (See set up Instructions) to the Transformer. Connect the Transformer to the AC mains. Charge will begin immediately.

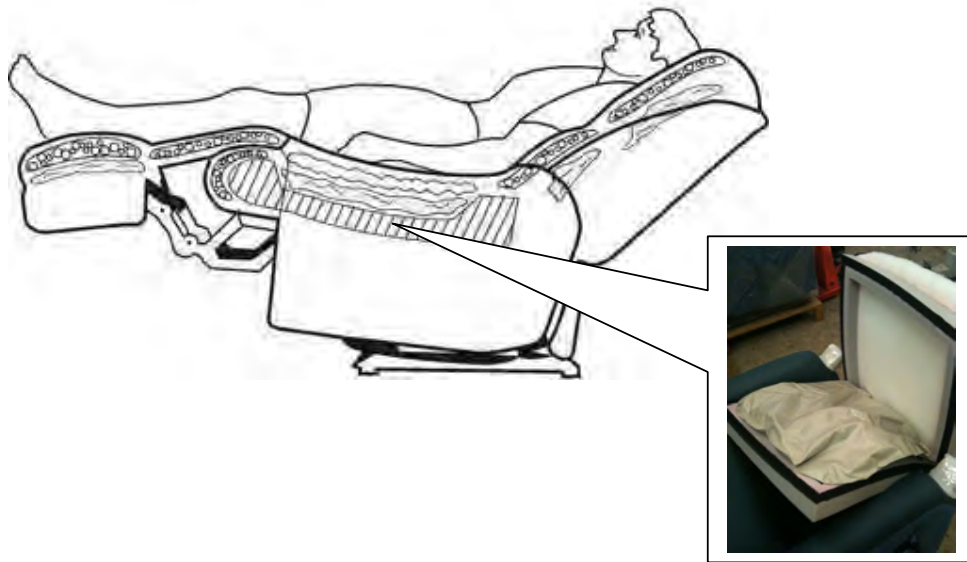
When charging the battery, connect the Charging Cable (See Set Up Instructions) to the transformer.



The Battery Capacity of 2.3Ah permits approximately 100 adjustment cycles per charge. If the battery voltage reaches a warning threshold, an acoustic alarm signal sounds when the manual switch is pressed. This is an indication that the battery needs to be recharged before further use.

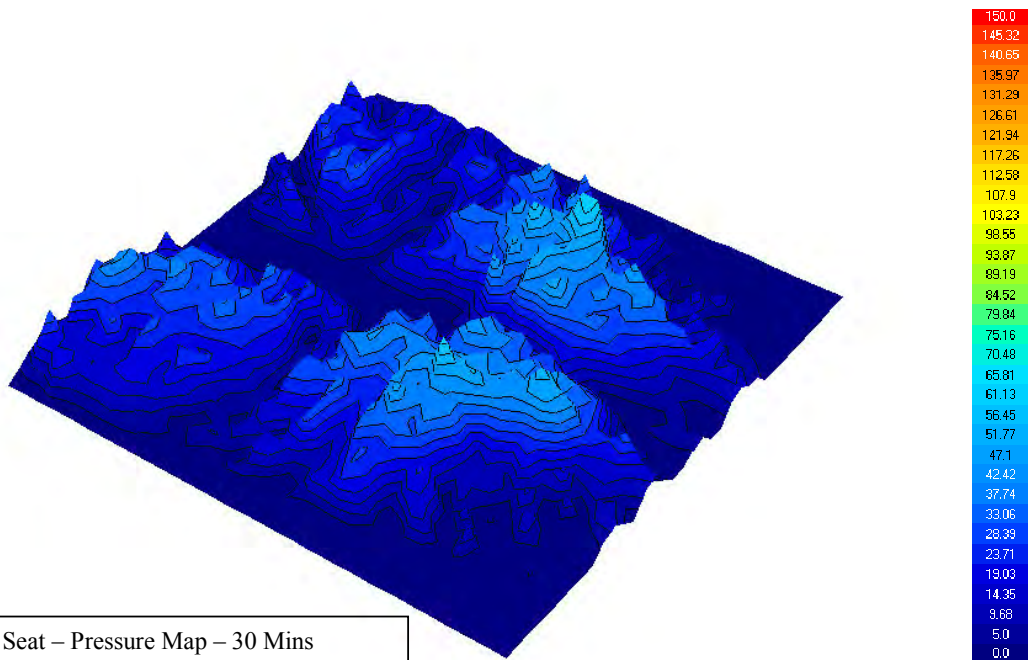
The battery should be fully charged at least every 6 months if not in use. Failure to do so will reduce the life of the battery. If used regularly, the battery should be charged once every 24 hours.

AIR COMFORT SEATING SYSTEM



The Exclusive *Air Comfort Seating System* is comprised of four separate air bladders providing complete head to toe pressure relief and superior comfort. Each Bladder is filled with a specifically calibrated low level of air to ensure maximum pressure relief for the average user. There should be no need to adjust the level of air or access the bladders unless to fulfill a specific clinical need and at the direction of a Clinician or if there appears to be a fault.

All Air Comfort models are extensively pressure mapped during research and development to identify the ideal air levels, construction and materials.



Compact Lift Seat – Pressure Map – 30 Mins
Measurement - mmHg

SERVICE & MAINTENANCE

Maintenance and Cleaning

1. Cleaning Instructions

- **Material:** Please follow specific fabric-cleaning instructions located on the rear backrest cushion.
- **Electrical components and cables:** The handset, transformer, cables and actuators should be regularly inspected, cleaned and replaced if found to be damaged. Failure to immediately replace damaged components can result in damage to other connected electrical components.
- **Lift Action:** The steel lift action should be regularly cleaned with a damp cloth and then wiped dry. After some time lubrication of joints and pivot points can assist

Common Service Concerns

1. **The transformer is overheating and the lift and recline action is not operating.** This usually indicates that one of the cords inside the action has been damaged or cut. Contact your dealer to arrange a repair. This damage is not a covered under warranty.
2. **There isn't enough air in the seat.** If you are unfamiliar with the Air system, it may appear that there is not enough air in the air bags. The air bladders work effectively when the user is sitting in the chair. When seated the small amount of air will displace throughout the bladders to create a thin layer of air cushioning. Do not add air to the bladders before first consulting your supplier or the manufacturer. If you believe one of the air bladders has deflated, un-velcro the cover on the side of the seat to access and carefully remove the problem bladder. Examine the bag and the valve for obvious punctures or any sign of damage, particularly along the welds. To test for a leak, inflate the bag (making sure the valve is then properly secured) and leave it aside for several hours or overnight to see if it deflates of its own accord. If the bladder shows signs of leaking air, a new bladder can be sourced through the supplier from whom the unit was purchased. Should you wish to repair the air bladder onsite, puncture kits are available. Follow the instructions on the puncture kits for repairing the leak.
3. **The seat area has collapsed.** Do not be alarmed when the seat settles into its natural shape. The seat should look slightly concaved after some time as the foam settles. **This does not necessarily indicate that the air bladders are faulty.** Sit in the unit and you will find that the cushioning is unchanged, or in fact improved. If you still feel the air bladder has a leak, follow the steps outlined in point 2 above.

WARRANTY / SERVICE CONTRACT

Warranty

Frame	5 Years
Foam	5 Years
Air Bags	2 Years
Castors	2 Years
Fabric	Manufacturers
Workmanship	2 Years

* Conditions Apply. See Warranty for further details

Service contract

A Hills Healthcare Technical Representative should service the product annually. Please contact your place of purchase for warranty claims or service contract enquires. We appreciate any feedback regarding Air Comfort products or service.

Supplied by:

