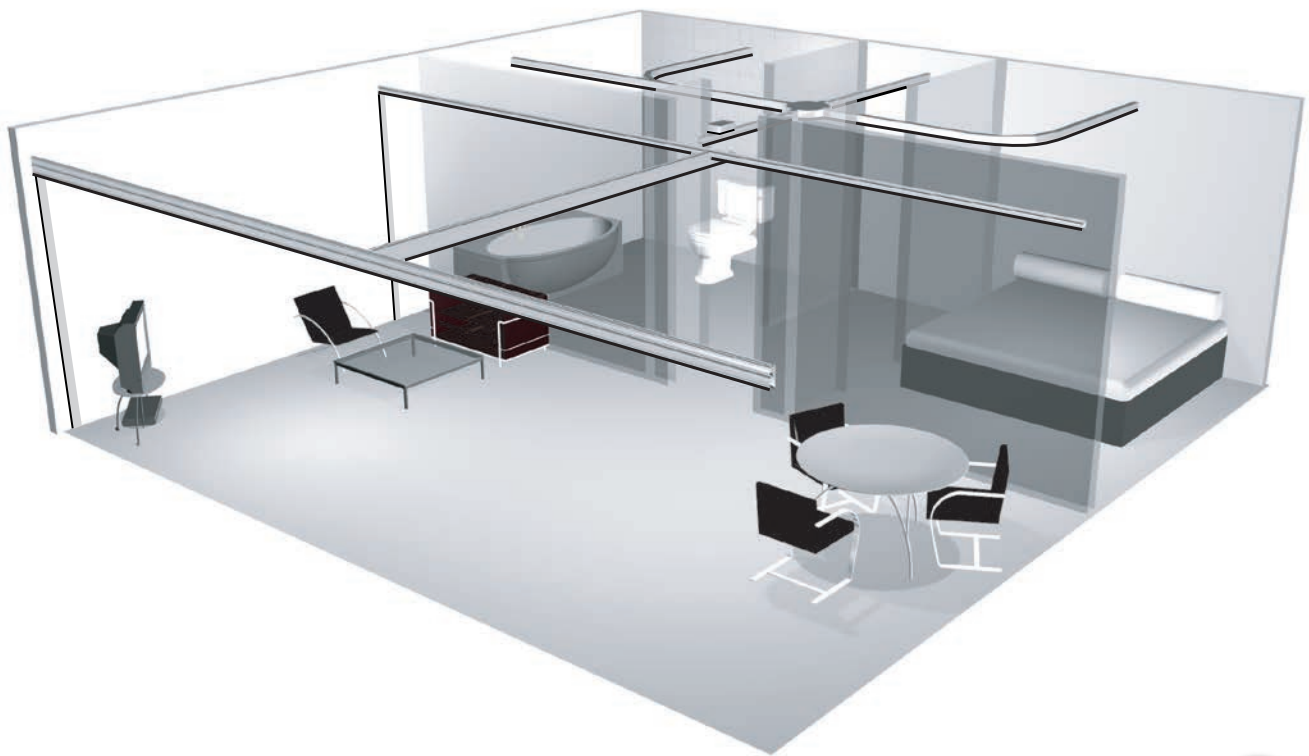




Guldmann™
Rail systems

Rail systems



When you're looking for a comfortable, stable and safe lifting system, a well-designed rail system is one of the key considerations.

Design, layout and installation of the rail system is crucial in producing a patient lift system that operates optimally to lift and move users.

That's why Guldmann rail systems are designed to ensure that the hoist moves quietly, smoothly and with a minimum of friction, using as little power as possible.

And this smoothness applies right across the capacity range, from 175-500 kg.

Install anywhere

You can install Guldmann rail systems virtually anywhere, attached to ceilings or walls, or free-standing. You can set them up as a single track, to cover a complete room, or throughout any space you choose. You can opt for unsupported spans of as much as 8 metres, which helps keep the interior space attractive and uncluttered.

Because they are made of lightweight aluminium and are assembled as modules, Guldmann rail system components are easy to transport, lift and install.

Continuous charging of the GH3 patient lift occurs anywhere within the rail system through the rail charging liners.

Combine anyhow

Guldmann rail systems consist of an extensive range of modular units, components and fittings that you can put together in lots of different ways, so the system meets your exact needs and fits well into your surroundings. They can also be installed in virtually any type of building.

The modular design means you can alter and extend Guldmann rail systems as needs change, or re-install them elsewhere, if necessary. This all means the installation is a good investment that provides long-term benefits.

All components are made of corrosion-resistant materials or are surface-treated so you can use them in rooms and installations where it's wet or humid.

GH Components for rail systems

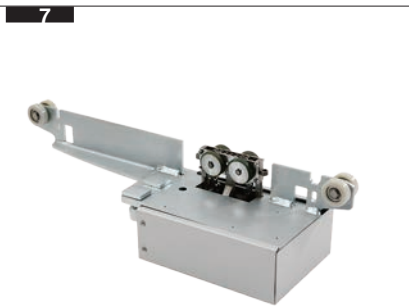
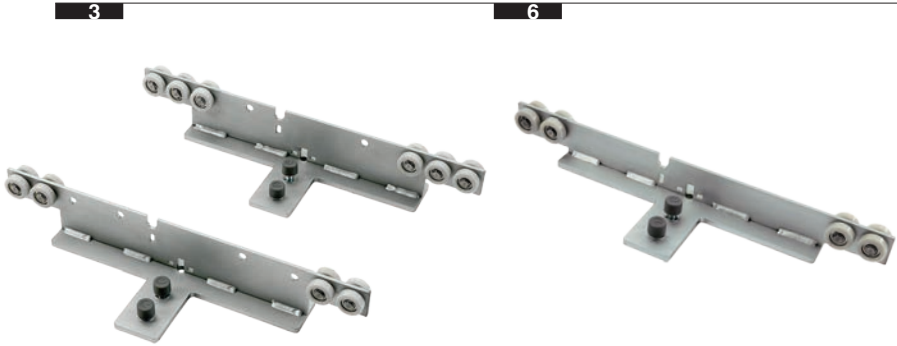


1
GH rails, A/B/C
See table below

2
Rail curves
See table below

Rail	A			B					C				
	Rail A	Covers grey	Covers white	Rail B	Covers grey	Covers white	Cutout for Combi-lock: Long	Cutout for Combi-lock: Short	Rail C	Covers grey	Covers white	Cutout for Combi-lock: Long	Cutout for Combi-lock: Short
1 m	550351	550230	550238										
2 m	550352	550231	550239										
3 m	550353	550232	550240	550359	550246	550252	550329	550335					
4 m	550354	550233	550241	550360	550247	550253	550330	550336					
5 m	550355	550234	550242	550361	550248	550254	550331	550337	550365	550258	550262	550341	550345
6 m	550356	550235	550243	550362	550249	550255	550332	550338	550366	550259	550263	550342	550346
7 m				550363	550250	550256	550333	550339	550367	550260	550264	550343	550347
8 m				550364	550251	550257	550334	550340	550368	550261	550265	550344	550348
Curves													
30°	550015	550285	550290										
45°	550016	550286	550291										
60°	550017	550287	550292										
90°	550018	550288	550293										
90° large	550025	550289	550241										

GH Components for rail systems



3
Traverse trolleys
 Max lifting capacity 400 kg
 for all types of rails
 lowered 25 mm 554189
 Max lifting capacity 500 kg
 for all types of rails
 lowered 25 mm 552889

4
Traverse trolleys
 Combi-lock 350 kg 550779

5
Traverse trolleys, standard
 Max lifting capacity 500 kg 550078

6
Traverse trolleys, standard
 Max lifting capacity 400 kg 550076

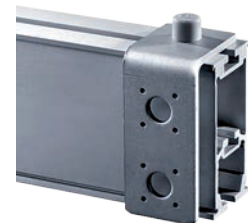
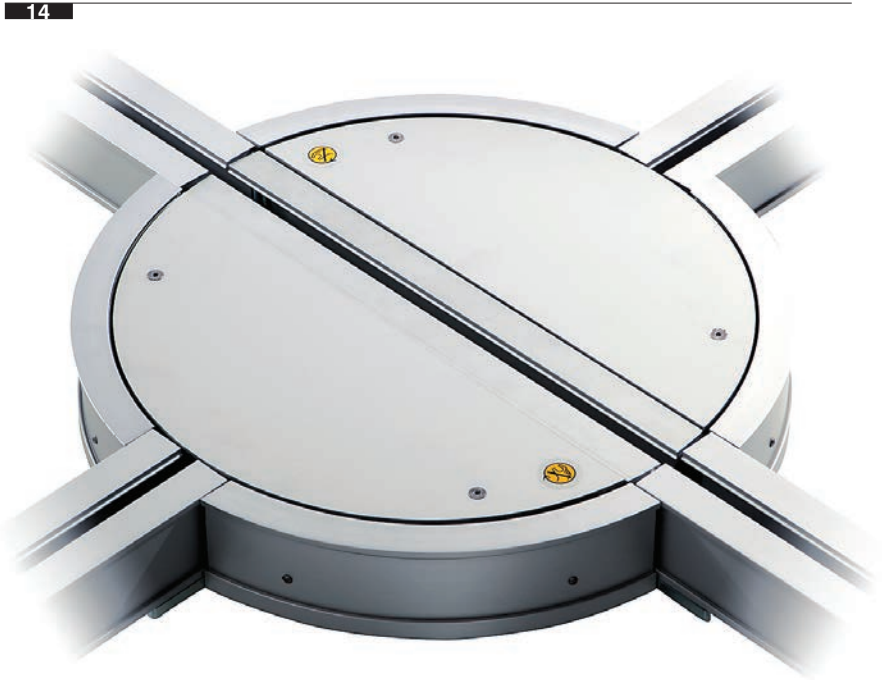
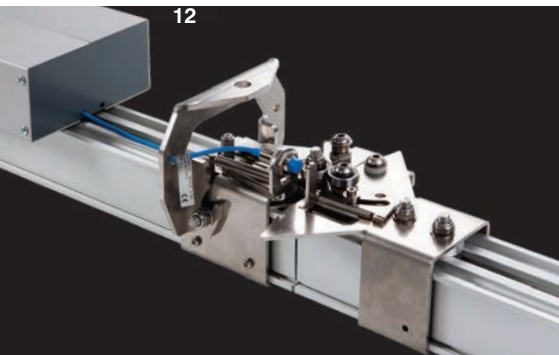
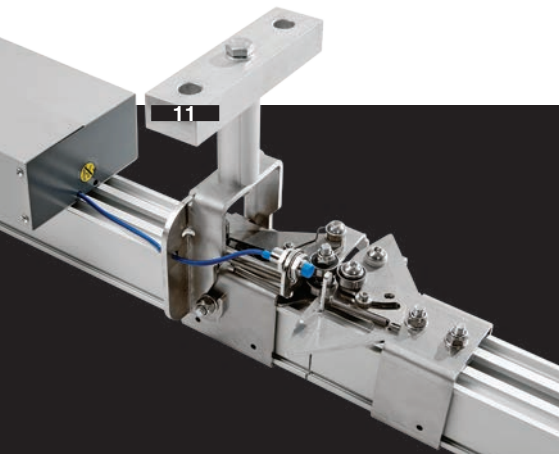
7
Drive motor for traverse rail
 for traverse B and C rails 551110

8
Switch track, electric, 225 kg
 GH Switch track 60° right 553991
 with coating 551058
 GH Switch track 60° left 553995
 with coating 551059
 GH Switch track 90° right 553925
 with coating 554027
 GH Switch track 90° left 553926
 with coating 554028

9
Travelling trolley for GH1 F
 551165

10
Travelling trolley for GH1 Q
 552730

GH Components for rail systems



11
Combi-lock and safety lock, 350 kg
 Combi-lock double, electric 551265
 Combi-lock single, electric 551264

12
Combi-lock, 255 kg
 Combi-lock single, manual 550621
 Combi-lock single, electric 550600
 Combi-lock double, electric 550633

13
Special rail cuts
 Cut-out for Combi-lock
 See table on page 20

14
Turntable, electric
 255 kg 550663
 with coating 551430

 350 kg 552882
 with coating 552984

15
GH wall bracket end
 end-mounted rail
 550451

16
GH wall bracket end
 side-mounted rail
 550451

GH Components for rail systems

17



20



18



21



19



22



23



24



17
GH ceiling bracket, standard
for straight rail and curve
..... 550402

18
GH ceiling bracket, standard
for rail joints
..... 550402

19
GH ceiling bracket for rail joints
..... 12448

20
GH bracket for rail joints
..... 12336

21
GH wall bracket side
side-mounted rail
..... 550450

22
GH wall bracket side
end-mounted rail
..... 550450

23
GH ceiling bracket, slope lowered
250 mm length 550412
500 mm length 550413
1000 mm length 550414
2000 mm length 550415

24
GH plasterboard bracket
..... 550452

GH Components for rail systems



25



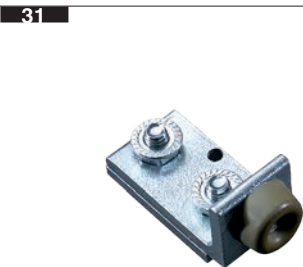
27



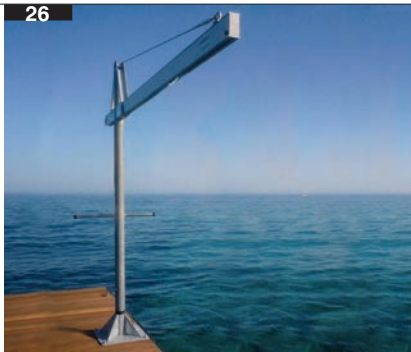
30



28



31



26



29



32

25
Free-standing single rail system
Length and height adjustable
 Max capacity 255 kg 553000

26
Swing Lift II
 Max lifting capacity 205 kg
 length 2500 mm
 17200

27
GH ceiling bracket, lowered rod
for straight rail and curve
 250 mm length 550498
 500 mm length 550436
 1000 mm length 550437
 2000 mm length 550438

28
GH extended ceiling bracket standard
for straight rail and curve
 550403

29
GH stabilizing bracket
 500 mm length 550417
 1000 mm length 550418
 2000 mm length 550419

30
GH ceiling bracket, straight lowered
for straight rail and curve
 250 mm length 550404
 500 mm length 550405
 1000 mm length 550406
 2000 mm length 550407

31
GH Endstop
 12330

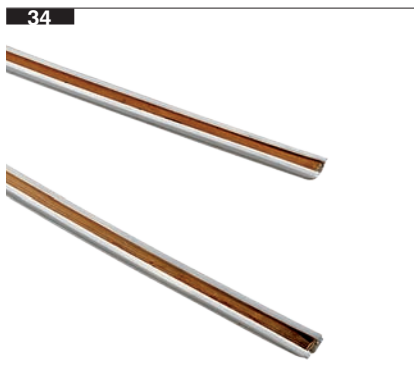
32
Hand control
Remote control IR
 for switch track/turntable/Combi-lock/GH3
 935034

Hand control with cable
 for switch track/turntable 9350151
 for Combi-lock 9350531

Wall switch – flush installed
 for switchtrack/turntable 9350471
 for Combi-lock 9350461

Wall switch – surface installed
 for Combi-lock 935048

GH Components for rail systems



33
Profile for ceiling

3 m, straight	550284
<i>For curve (set)</i>	
30°	550280
45°	550281
60°	550282
90°	550283
<i>For turntable (set)</i>	
	550755

34
Charging liner

6 m rail	550425
10 m rail	550427

35
Power supply

Transformer AC, class I for seismic installation	552480
Transformer AC, class I	550200
Power supply, GH1	551244

36
Charging liner connector

	551432
--	--------

37
Side cover
See table on page 20

38
End cover

	Grey	White
Rail A	550447	550463
Rail B	550448	550464
Rail C	550449	550465

39
Upright support brackets
White as standard, RAL 9016

without foot	124841
with low foot (150 mm)	124801
with high foot (250 mm)	124811
Guideway for upright support	1248031

Grey is an option, RAL 9006

without foot	124844
with low foot (150 mm)	124804
with high foot (250 mm)	124814
Guideway for upright support	1248034