

Ropox Toilet Support Arms

All models of Straight and Wave (40-40110, 40-40115, ..20, ..25, ..40, ..45)

CONSTRUCTION

The wall must be made of a material suited for screw mounting and approved for damp rooms.
 The hatched area is the minimum area for reinforcement of the wall. Reinforcement from floor to ceiling is advisable.

The Toilet Support arms from 40-40110 up to 40-40145 are all 900mm (35 1/2") long.

All support arms are load-tested and safe up to 400kg (882 lbs). According to DS/EN 12182 the max user weight are:

Max. user weight according to DS/EN 12182

40-40110: 80 kg (176 lbs)
 40-40115: 80 kg (176 lbs)
 40-40120: 135 kg (298 lbs)
 40-40125: 135 kg (298 lbs)
 40-40140: 190 kg (419 lbs)
 40-40145: 190 kg (419 lbs)

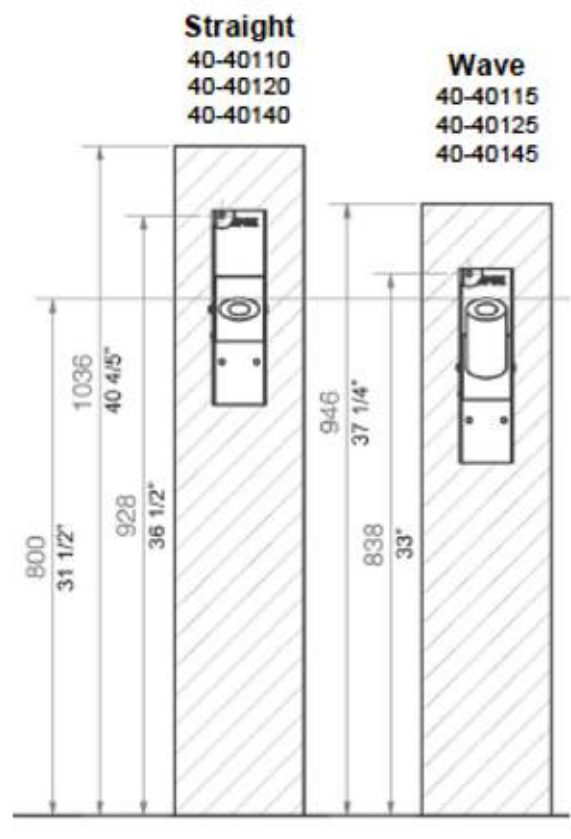
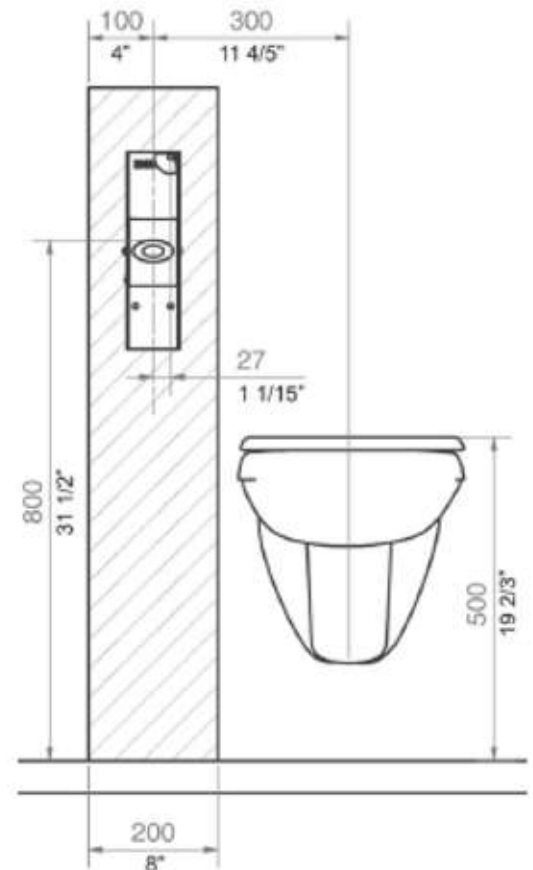
Max. tensile load of upper screws

40-40110: 100 kg/screw (220 lbs)
 40-40115: 100 kg/screw (220 lbs)
 40-40120: 100 kg/screw (220 lbs)
 40-40125: 100 kg/screw (220 lbs)
 40-40140: 236 kg/screw (520 lbs)
 40-40145: 236 kg/screw (520 lbs)

NOTE:

All dimensions are based on a fixed height of the toilet support of 800mm (31 1/2") above floor level. If a change of this height is required, the recommended dimensions must be changed accordingly.

The unit is supplied with a set of 6 screws and rawlplugs suitable for mounting on a concrete wall.
 The fitter should always consider the material, condition and strength of the wall and use screws and rawlplugs suitable for the specific wall type.



Ropox Toilet Support Arms

Optional: Height-adjustable wall fitting (40-40907)

CONSTRUCTION

The wall must be made of a material suited for screw mounting and approved for damp rooms.

The hatched area is the minimum area for reinforcement of the wall. Reinforcement from floor to ceiling is advisable.

All support arms are load-tested and safe up to 400kg (882 lbs). According to DS/EN 12182 the max user weight are:

Max. user weight according to DS/EN 12182

40-40110: 80 kg (176 lbs)

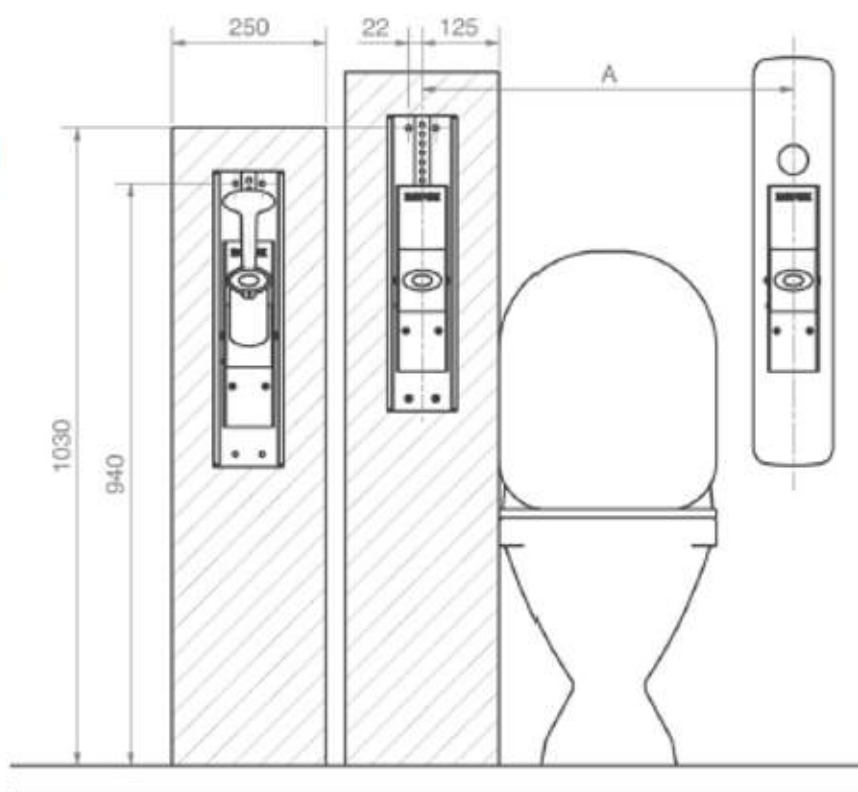
40-40115: 80 kg (176 lbs)

40-40120: 135 kg (298 lbs)

40-40125: 135 kg (298 lbs)

40-40140: 190 kg (419 lbs)

40-40145: 190 kg (419 lbs)



Max tensile load of upper screws

40-40110: 72 kg/screw (158 lbs)

40-40115: 72 kg/screw (158 lbs)

40-40120: 72 kg/screw (158 lbs)

40-40125: 72 kg/screw (158 lbs)

40-40140: 171 kg/screw (376 lbs)

40-40145: 171 kg/screw (376 lbs)

Wave	Straight
40-40115	40-40110
40-40125	40-40120
40-40145	40-40140

NOTE:

All dimensions are based on a fixed height of the toilet support of 800mm +/- 60mm (31 1/2" +/- 2 1/3") above floor level. If a change of this height is required, the recommended dimensions must be changed accordingly.

The unit is supplied with a set of 8 screws and rawplugs suitable for mounting on a concrete wall. The fitter should always consider the material, condition and strength of the wall and use screws and rawplugs suitable for the specific wall type.

Distance A

Acc. to standard	A
DS 3028	600 mm (23 5/8")
DIN 18040-1	712-762 mm (28 1/32"-30")